



NEWINGTON
LONDON

2 Bedrooms

Apartment

Located in London

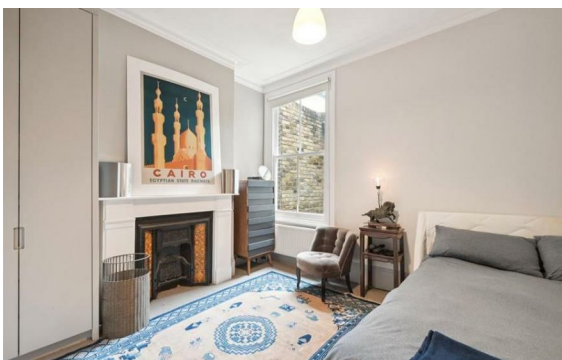
£1,020 Per Month



info@newingtonstates.com

<http://www.newingtonstates.com>

020 7724 2233



Brand new two bedroom apartment that exemplifies modern urban living in one of London's most beautiful and stunning location - Marylebone. The property comprises two double bedrooms, 1 bathroom, modern kitchen with excellent appliances, stunning dinning area with an access to outside space and high quality wooden flooring.

Property is well serviced by numerous transport links including Baker Street Station, Marylebone Station and variety of the bus routes. Stunning and breathtaking Marylebone High Street is only 10 minutes walk away and has got a lot to offer: posh restaurants, cute coffee shops, high end boutiques, beautiful cinema and little souvenir shops.

EPC rating: B

Energy Efficiency Rating: B

Agents Note: Whilst every care has been taken to prepare these particulars, they are for guidance purposes only. All measurements are approximate and are for general guidance purposes only and whilst every care has been taken to ensure their accuracy, they should not be relied upon and potential buyers/tenants are advised to recheck the measurements.

NEWINGTON LONDON

60 Upper Montagu Street

London

W1H 1SN

020 7724 2233

info@newingtonstates.com

<http://www.newingtonstates.com>